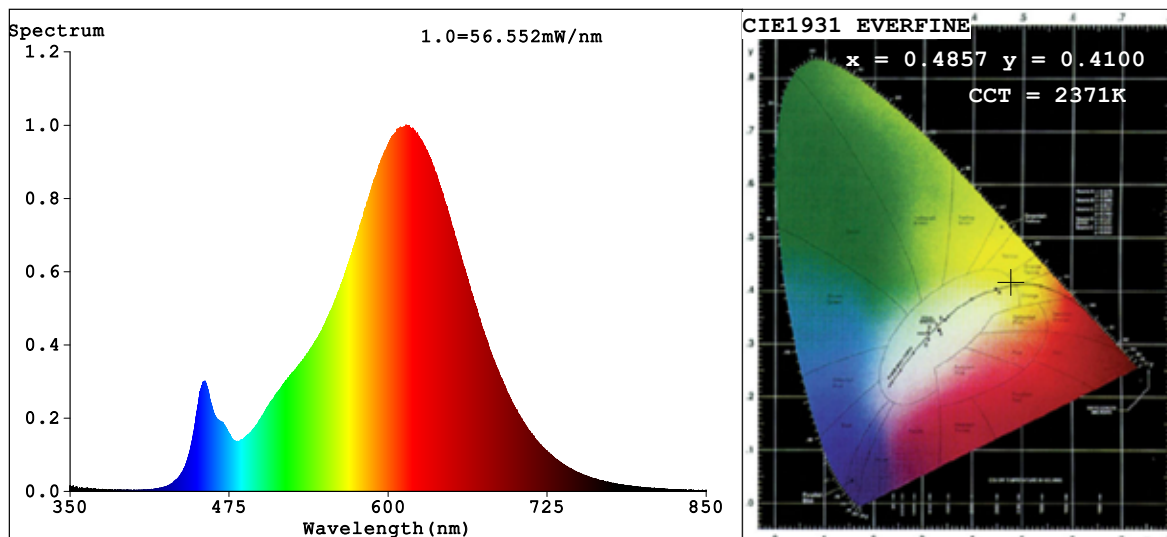


Spectrum Test Report



Color Parameters:

Chromaticity Coordinate: $x=0.4857$ $y=0.4100$ $u'=0.2796$ $v'=0.5311$
 CCT=2371K (Duv=-0.0015) Dominant WL: $\lambda_d = 586.6\text{nm}$ Purity=68.9%
 Ratio: R=28.6% G=69.5% B=2.0%; Peak WL: $\lambda_p = 614.1\text{nm}$ FWHM=113.5nm
 Render Index: Ra=83.4 CRI=79.7 TM30: Rf=82 Rg=96
 R1 =83 R2 =94 R3 =93 R4 =80 R5 =83 R6 =94 R7 =81
 R8 =59 R9 =18 R10=87 R11=79 R12=81 R13=86 R14=97 R15=76

Photo Parameters:

Flux = 2342 lm Eff. : 112.52 lm/W Fe = 7.843 W

Electrical parameters:

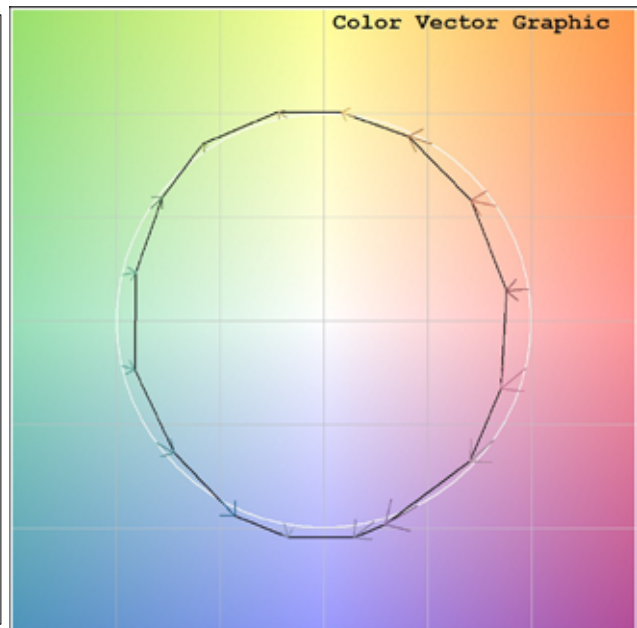
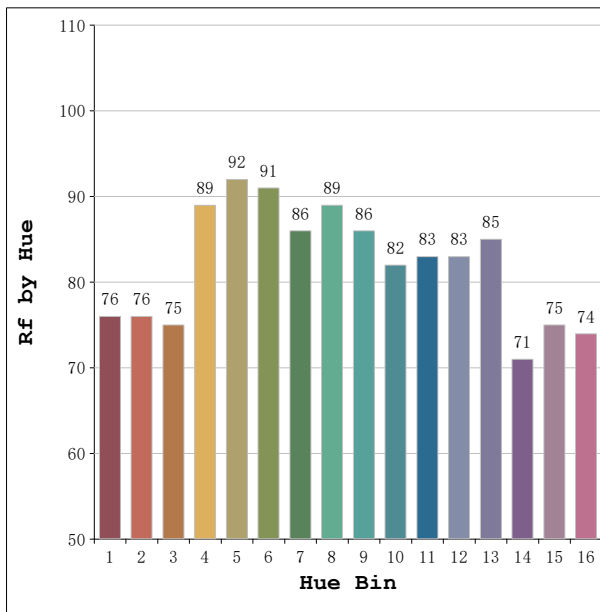
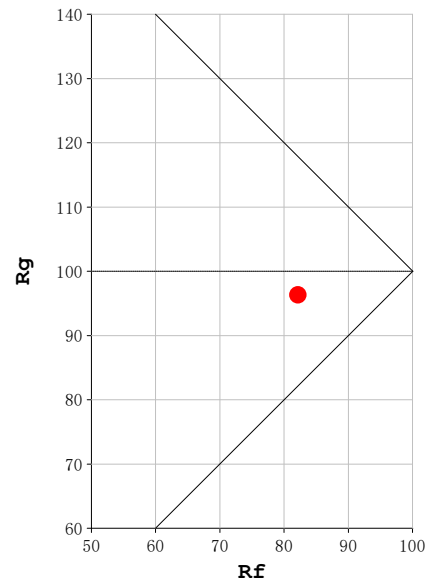
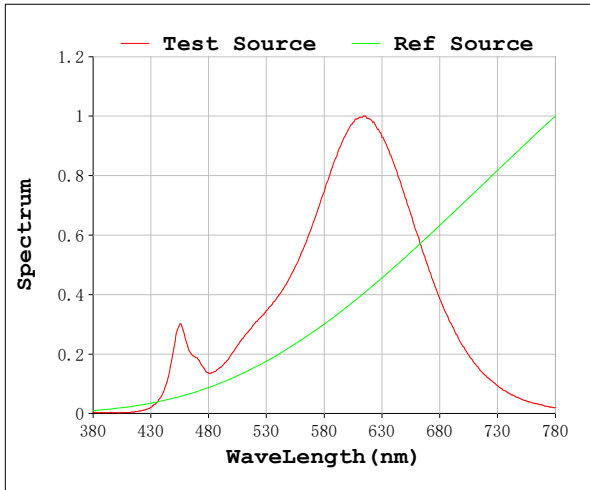
V = 23.998 V I = 0.8674 A P = 20.82 W PF = 1.000

Status: Integral T = 514 ms Ip = 53102 (81%)

Model: Ecoled Élite 20 2400K
 Tester: Sergio Carneros
 Temperature: 20Deg
 Manufacturer: Luz Negra

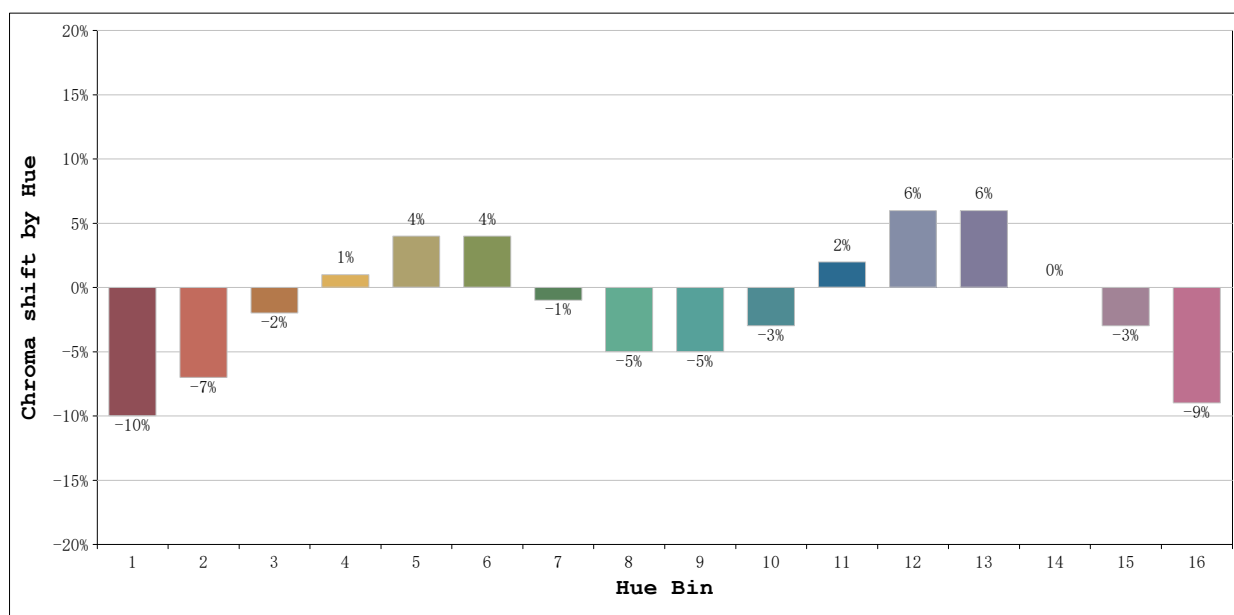
Number: 31.217
 Date: 2025-08-26 10:56:25
 Humidity: 50%
 Remarks: 100cm de tira flexible

Rf: 82 **CCT: 2371 K** **u': 0.2796**
Rg: 96 **Duv: -0.0015** **v': 0.5311**



Model:Ecoled Élite 20 2400K
Tester:Sergio Carneros
Temperature:20Deg
Manufacturer:Luz Negra

Number: 31.217
Date:2025-08-26 10:56:25
Humidity:50%
Remarks:100cm de tira flexible



			Graphic shift(%)	
Hue Bin	Hue Angle	Rf	Chroma	Hue
1	0.0° - 22.5°	76	-10	1
2	22.5° - 45.0°	76	-7	9
3	45.0° - 67.5°	75	-2	11
4	67.5° - 90.0°	89	1	6
5	90.0° - 112.5°	92	4	4
6	112.5° - 135.0°	91	4	0
7	135.0° - 157.5°	86	-1	-7
8	157.5° - 180.0°	89	-5	-2
9	180.0° - 202.5°	86	-5	3
10	202.5° - 225.0°	82	-3	9
11	225.0° - 247.5°	83	2	10
12	247.5° - 270.0°	83	6	3
13	270.0° - 292.5°	85	6	-10
14	292.5° - 315.0°	71	0	-17
15	315.0° - 337.5°	75	-3	-14
16	337.5° - 360.0°	74	-9	-11

Model:Ecoled Élite 20 2400K
Tester:Sergio Carneros
Temperature:20Deg
Manufacturer:Luz Negra

Number: 31.217
Date:2025-08-26 10:56:25
Humidity:50%
Remarks:100cm de tira flexible